



# Brisbane City Hall Spaces

---

## BRISBANE CITY HALL BY EPICURE

### AUDIO-VISUAL SERVICES

Our in-house audio-visual partner is NW Group. Being Brisbane City Hall's in-house technical partner means that NW Group can provide seamless and cost-effective technical solutions for any event brief. Having an onsite Technical Manager ensures that our clientele receive specialist expertise when it comes to technology, audio-visual equipment, styling and theming and production management. This not only instils confidence to our customers from the beginning but becomes a part of the memorable experience that is created when holding an event at Brisbane City Hall.

NW Group is the leading full-service provider of premium audio, lighting, visual and staging solutions in Australasia. Operating since 1975, they have built a strong industry reputation and deep relationships with a broad customer base. They have a world class team delivering technical excellence and expertise serving both the corporate and live event market.

Should you wish to utilise an external audio-visual production company, or provide your own equipment, it is a requirement that our house technician be present to supervise and assist for the duration of move-in and move-out. There is a charge of \$90.00 (excl. GST) per hour for a minimum of 4 hours for this service. We encourage any external contractors to incorporate the services of our technician into their planning and budget to reduce their own labour costs.

I would be happy to arrange a meeting with the production and styling team from NW Group who will be very happy to prepare an event solution suited to your budget.

**Justin Leaman**

Brisbane City Hall Production Manager

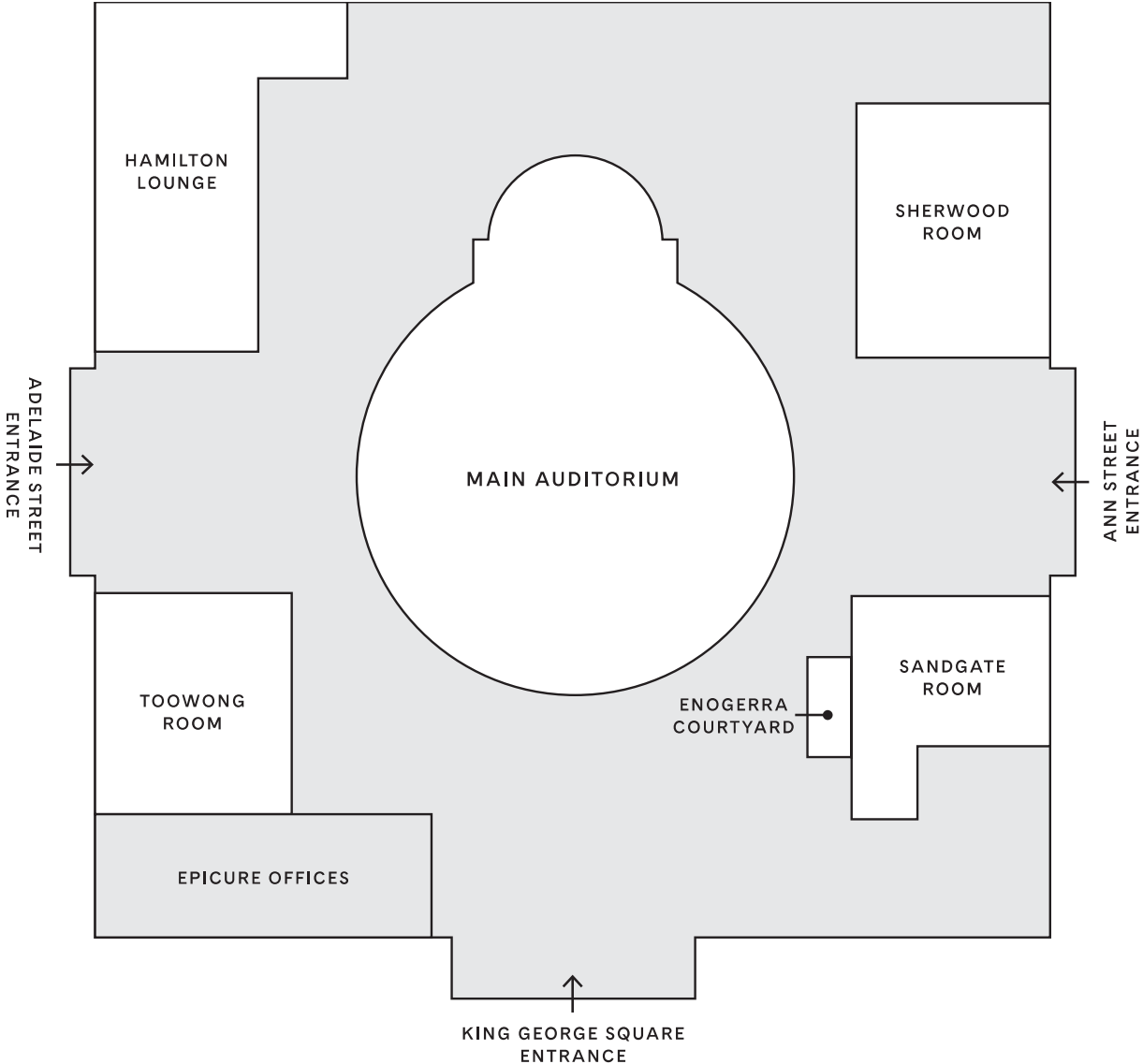
+61 404 421 826

J.leaman@nwgroup.com.au



BRISBANE CITY HALL  
BY EPICURE

GROUND FLOOR PLAN





# BRISBANE CITY HALL BY EPICURE

## MAIN AUDITORIUM

### Facilities

- Direct access to loading bay
- Permanent stage with choir riser
- Stage hoist
- Dress circle balcony (with wheelchair access)
- Steinway grand piano
- Extensive back of house facilities including individual and group dressing rooms with full bathroom facilities

### Capacity

- Theatre ground lvl – 1,178
- Balcony – 358
- Banquet style ground lvl – 670 (No dancefloor, etc.)

### Features

- Unique circular room
- Polished wooden floor and stage
- Ornate sculpturing by Daphine Mayo
- 120-year-old Father Henry Willis organ with over 4000 pipes

### Accessibility

- Wheelchair access to ground floor function spaces
- Hearing loop in all function rooms

### Venue Hire

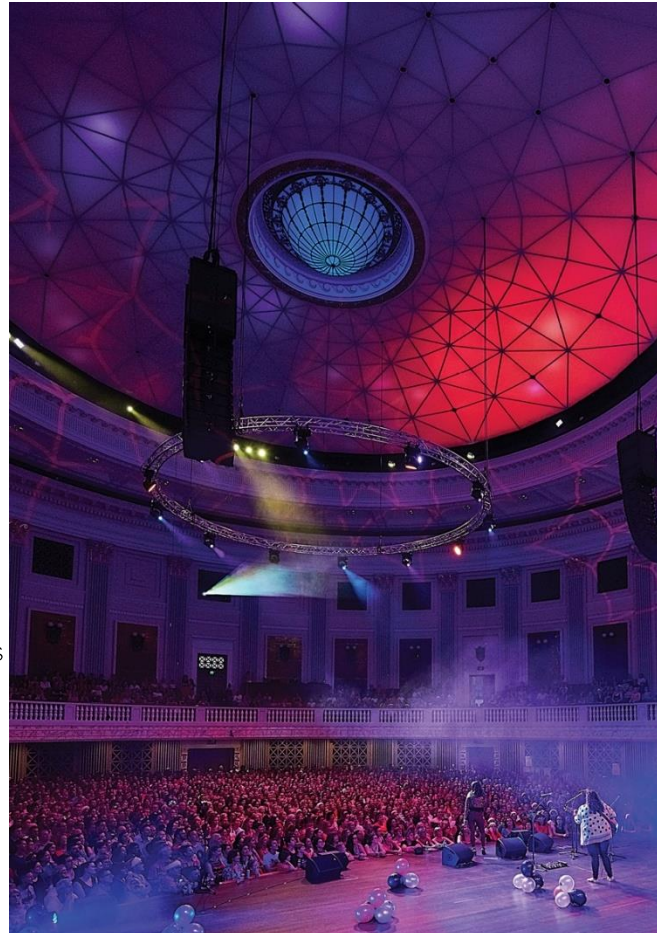
#### Minimum Spend Lunch or Day Delegate

Every Day – \$16,000.00 (NFP) \$20,000.00 (All others)

#### Minimum Spend Dinner

Friday to Saturday – \$40,000.00 (NFP) \$50,000.00 (All others)

Sunday to Thursday – \$16,000.00 (NFP) \$20,000.00 (All others)



# BRISBANE CITY HALL BY EPICURE

---

## SANDGATE ROOM

---

### Facilities

- Front and back access to room for different entry and exit
- Dedicated servery kitchen

### Features

- Windows for natural light
- Located close to Main Auditorium
- Adjoins the Enoggera Courtyard providing an indoor/outdoor venue
- Ample power access around room skirting

### Accessibility

- Wheelchair access to ground floor function spaces
- Hearing loop in all function rooms

### Capacity

- Theatre style – 253
- Banquet style – 100

### Venue Hire

#### Minimum Spend – Day Delegate

Every Day – \$2,000.00

#### Venue Hire

- 6hr Hire - \$492.00 (NFP)
- 8hr Hire - \$990.00 (NFP)
  
- 6hr Hire - \$820.00 (All others)
- 8hr Hire - \$1,650.00 (All others)





# BRISBANE CITY HALL BY EPICURE

## TOOWONG ROOM

### Facilities

- Front and back access to room for different entry and exit
- Dedicated servery kitchen

### Features

- Windows for natural light
- Located close to Main Auditorium
- Ground Floor access
- Ample power access around room skirting

### Accessibility

- Wheelchair access to ground floor function spaces
- Hearing loop in all function rooms

### Capacity

- Theatre style – 352
- Banquet style – 200

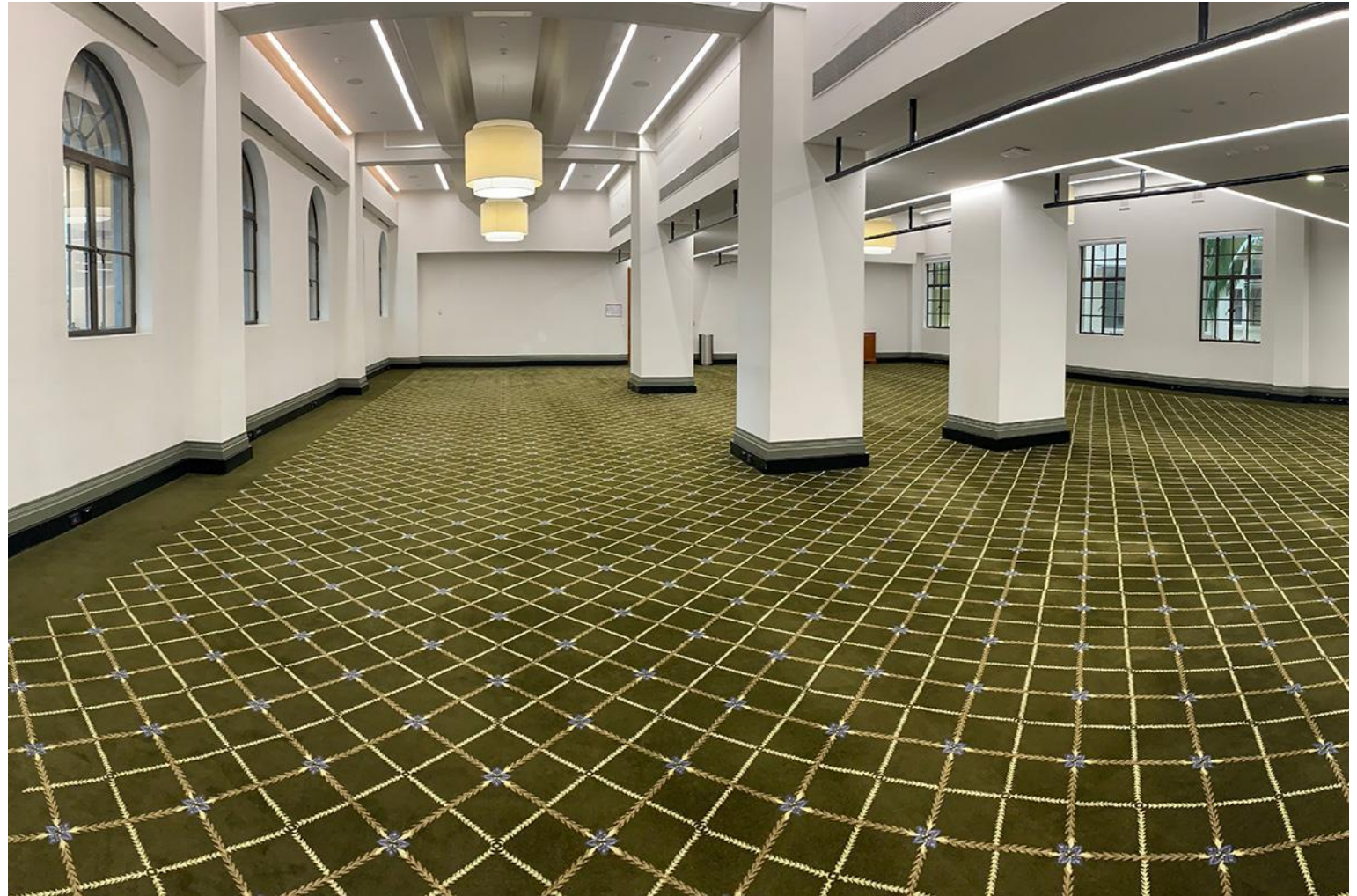
### Venue Hire

#### Minimum Spend – Day Delegate

Every Day – \$2,000.00

#### Venue Hire

- 6hr Hire - \$492.00 (NFP)
- 8hr Hire - \$990.00 (NFP)
  
- 6hr Hire - \$820.00 (All others)
- 8hr Hire - \$1,650.00 (All others)



# BRISBANE CITY HALL BY EPICURE

---

## HAMILTON LOUNGE

---

### Facilities

- Unique dining experiences
- Premium events

### Features

- Show kitchen
- Deluxe lounge
- Private bar

### Accessibility

- Wheelchair access to ground floor function spaces

### Capacity

- Theatre bar end – 117
- Theatre lounge end - 72
- Banquet bar end – 60
- Banquet lounge end – 100

### Venue Hire

#### Minimum Spend Lunch or Day Delegate

Every Day – \$6,000.00 (NFP) \$6,500 (All Others)

#### Minimum Spend Dinner

Friday to Saturday – \$7,000.00 (NFP) \$8,500.00 (All Others)

Sunday to Thursday – \$6,000.00 (NFP) \$7,500.00 (All Others)

#### Venue Hire

- 6hr Hire - \$840.00 (NFP)
- 8hr Hire - \$1,650.00 (NFP)
- 6hr Hire - \$1,400.00 (All others)
- 8hr Hire - \$2,750.00 (All others)





# BRISBANE CITY HALL BY EPICURE

## SHERWOOD ROOM

### Facilities

- Direct access to Main Auditorium dressing room and toilets

### Features

- Ground floor access from Adelaide Street entrance, located close to Main Auditorium
- Ample power access around room skirting

### Accessibility

- Wheelchair access to ground floor function spaces
- Hearing loop in all function rooms

### Capacity

- Theatre style – 253
- Banquet style – 200

### Venue Hire

#### Minimum Spend Day Delegate

Every Day – \$2,000.00

#### Venue Hire

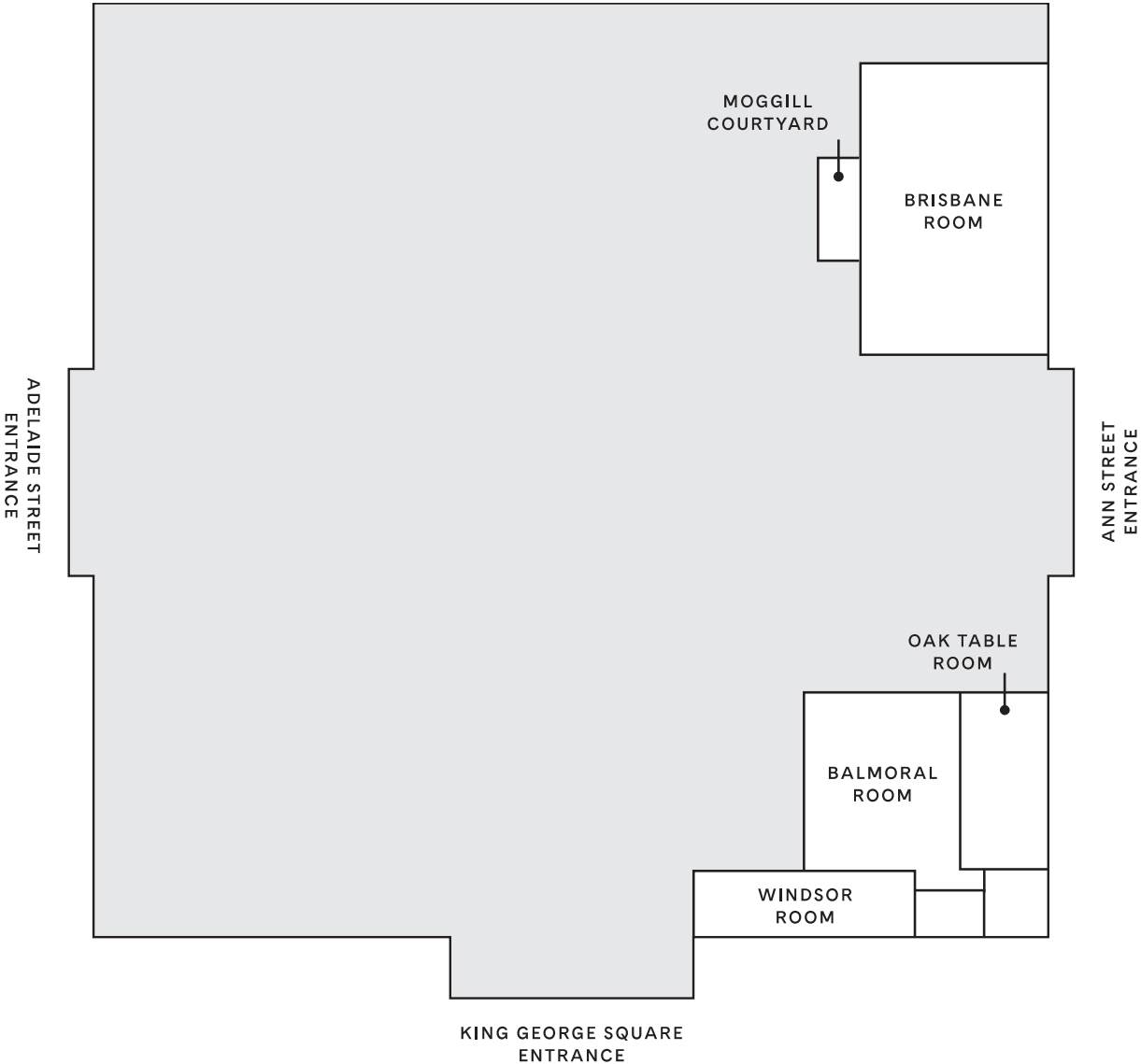
- 6hr Hire - \$600.00 (NFP)
- 8hr Hire - \$1,200.00 (NFP)
- 6hr Hire - \$1,00.00 (All others)
- 8hr Hire - \$1,650.00 (All others)





BRISBANE CITY HALL  
BY EPICURE

LEVEL 1 FLOORPLAN



# BRISBANE CITY HALL BY EPICURE

## BRISBANE ROOM

### Facilities

- Direct access to Moggill Courtyard
- Private dressing/powder room ideal for bridal parties or VIP's
- Dedicated servery kitchen

### Features

- Grand chandeliers
- Polished timber floor
- External private courtyard
- Ornate plasterwork throughout
- Natural light on two sides of the room through Heritage windows

### Accessibility

- Wheelchair access via lift to Level 1
- Hearing loop in all function rooms

### Capacity

- Theatre style – 200
- Banquet style – 200
- Cocktail style - 250

### Venue Hire

#### Minimum Spend Lunch or Day Delegate

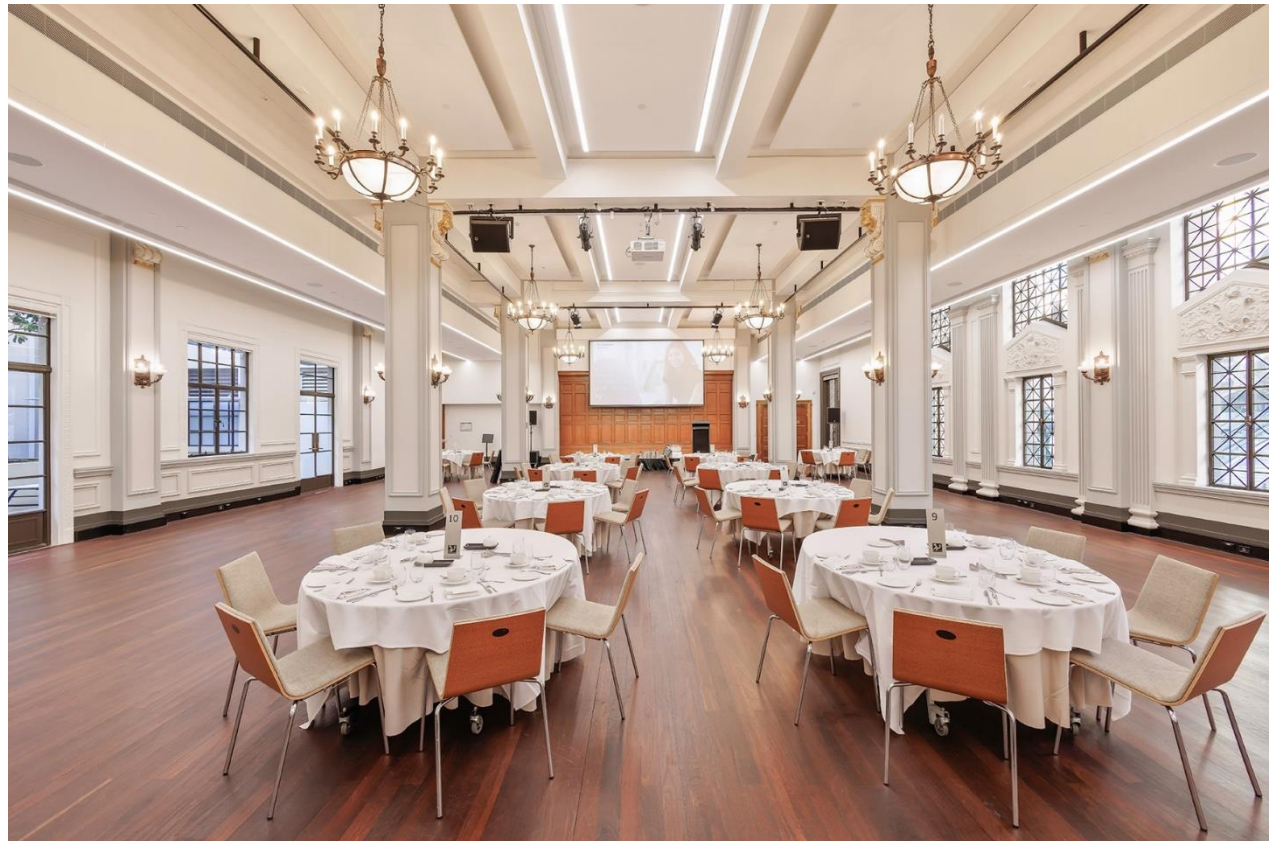
Every Day – \$6,000.00 (NFP) \$7,500.00 (All others)

#### Minimum Spend Dinner

Friday to Saturday – \$8,000.00 (NFP) \$8,500.00 (All Others)

Sunday to Thursday – \$7,000.00 (NFP) \$7,500.00 (All Others)

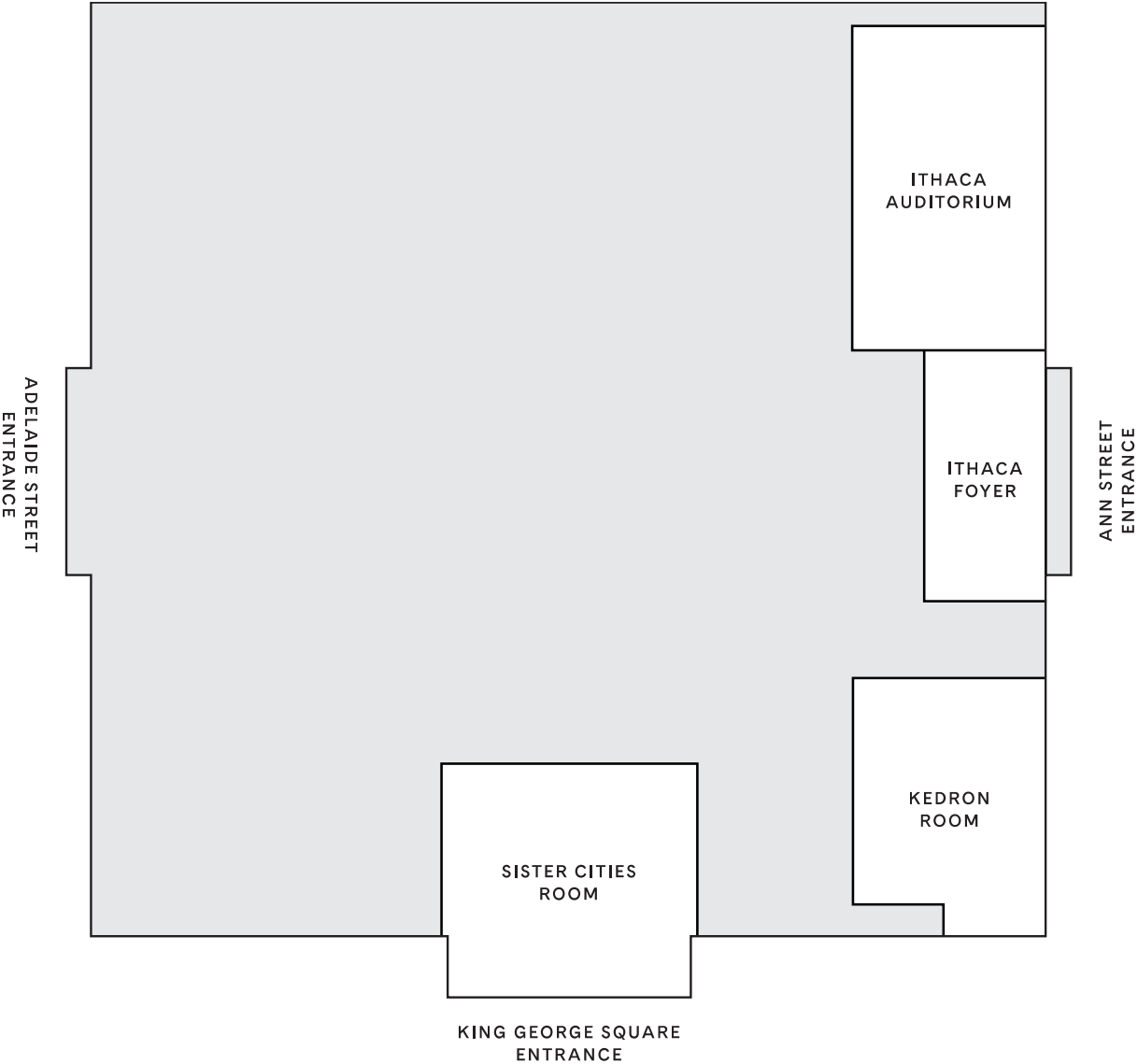
- 6hr Hire - \$840.00 (NFP)
- 8hr Hire - \$1,650.00 (NFP)
- 6hr Hire - \$1,400.00 (All others)
- 8hr Hire - \$2,750.00 (All others)





BRISBANE CITY HALL  
BY EPICURE

LEVEL 2 FLOORPLAN



# BRISBANE CITY HALL BY EPICURE

## ITHACA AUDITORIUM

### Facilities

- Extensive back of house facilities including individual and group dressing rooms with full bathroom facilities

### Features

- Polished wooden stage
- Stage curtains and drapes
- Timber floor
- Piano
- Dedicated servery kitchen and bar
- Black out facilities
- Foyer area
- Large pillarless room
- Heritage windows
- Ornate copper pressed ceiling
- Ithaca Foyer available for hire

### Accessibility

- Wheelchair access via lift to Level 2
- Hearing loop in all function rooms

### Capacity

- Theatre style – 370
- Banquet style – 200

### Venue Hire

#### Minimum Spend Lunch or Day Delegate

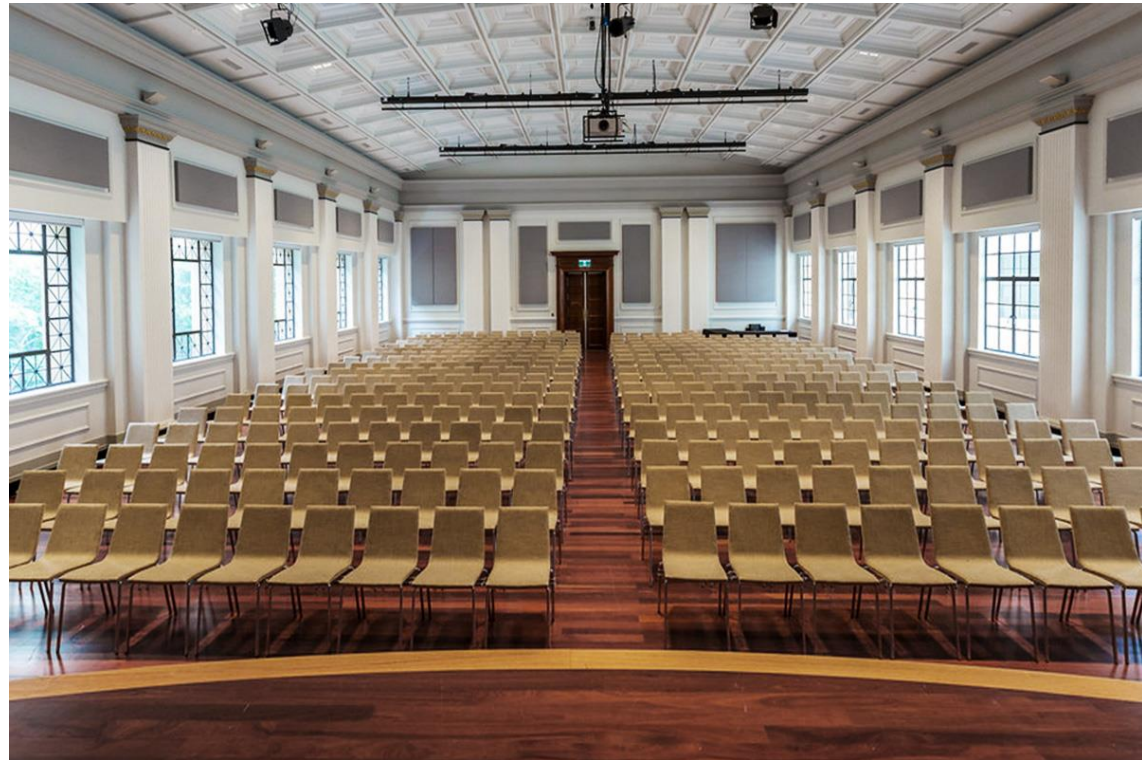
Every Day – \$8,000.00 (NFP) \$10,000.00 (All others)

#### Minimum Spend Dinner

Friday to Saturday – \$10,000.00 (NFP) \$12,500.00 (All Others)

Sunday to Thursday – \$8,000.00 (NFP) \$10,000.00 (All Others)

- 6hr Hire - \$840.00 (NFP)
- 8hr Hire - \$1,650.00 (NFP)
- 6hr Hire - \$1,400.00 (All others)
- 8hr Hire - \$2,750.00 (All others)





# BRISBANE CITY HALL BY EPICURE

---

## KEDRON ROOM

---

### Facilities

- Front and back access to room for different entry and exit
- Dedicated servery kitchen

### Features

- Windows for natural light
- Capability of 3 projector screens
- Ample power access around room skirting

### Accessibility

- Wheelchair access via lift to Level 2
- Hearing loop in all function rooms

### Capacity

- Theatre style – 236
- Banquet style – 150

### Venue Hire

#### Minimum Spend Day Delegate

Every Day – \$2,000.00

#### Venue Hire

- 6hr Hire - \$492.00 (NFP)
- 8hr Hire - \$1,650.00 (NFP)
  
- 6hr Hire - \$820.00 (All others)
- 8hr Hire - \$1,540.00 (All others)







T: 07 3014 4705  
E: [events.bch@epicure.com.au](mailto:events.bch@epicure.com.au)

BRISBANE CITY HALL  
BY EPICURE

[EPICURE.COM.AU](http://EPICURE.COM.AU)  
A: 64 Adelaide St Brisbane City 4000